

MARCH 2010

2010 MENZA e-NOTES



Music Education New Zealand Aoteroa



MUSIC EDUCATION
NEW ZEALAND•AOTEAROA
Mātauranga ā Puoro o Aotearoa

MARCH



From the President: Stephanie Lees

Tena Koutou, I hope you have all had a chance to enjoy some wonderful summer weather. The Board met recently for a "retreat"—*aka a really long meeting over 2 days instead of one ...* Great, because one gets to know each other a little better whilst preparing meals and taking the odd swim—and there's even a few moments for a ukulele jam (Ukuleles have even infiltrated MENZA board meetings!) There is much to report; Your regions will be part of a consultation as to how we can strengthen our organization in the face of the current educational and economic challenges. One of the Board members will be contacting your office holders very soon. A random selection of members are being consulted also. We have been sad to learn that the Quality Teaching Partnership Fund (which has helped sub-

discontinue many of the MENZA PD initiatives around the country the last few years) will be "discontinued" after June 30, as the result of a recent MOE review. Luckily we achieved 2 grants in the last round and have 2 exciting courses coming up in Nelson (March 26-27) and Northland—Kerikeri (April 23-24). Great presenters (Horomona Hora, Robyn Trinnick, Rae Si'ilata, Maria Winder and Julian Raphael) —assisting teachers to further develop a singing culture in their schools to integrate literacy and numeracy initiatives into a musical classroom, knowledge and skills with taonga puoro, ukulele and more. Appropriate for EC through to Year 10. See pages 5-6.

Over the weekend we also planned some ex-

citing changes for the 2010 Sound Arts Magazine. May will not only be NZ Music Month this year but Education Advocacy (see over for more on this) we are looking at 10,000 copies of Sound Arts advocacy material being distributed as an insert in NZ Musician Magazine. We hope this will really help to get the message out there about how important music is to education. The subsequent issues are planned to have a greater resource focus for members.

Celia Stewart and Julian Raphael are the Sound Arts editors in 2010. Contacts below. (Chris Archer is now employed at Creative NZ. I'd like to thank Chris Archer publicly for the fabulous editing he's done for us in the past).

Plans for :

- ♥ Consultation with regional partners
- ♥ Metanz—Menza new accord - new website discussions
- ♥ NZ MUSIC month
- ♥ "Hook, line and sing-along" 31 MAY
- ♥ Advocacy
- ♥ Changes to the Board
- ♥ QTP funding to end
- ♥ National Courses coming up
- ♥ Conference 2011
- ♥ News from regional groups
- ♥ PD in NELSON and Northland regions
- ♥ Sound Arts



**WANT TO WRITE
THE SONG OF
NZ MUSIC
MONTH 2010?**

SCHOOL STUDENTS VISIT:
www.nzmusic.org.nz/education

ENTRIES CLOSE 20 MARCH, 2010.



“Hook, line and Sing-a-long” 31 MAY 2010

An exciting initiative – (possibly terrifying in my case as I am responsible for making it all happen !) is the joint NZ Music Month— MENZA— “Hook, line and sing-a-long” to happen on Monday 31 MAY. At 12 o’clock we will have the nation singing together ! “What song ?” you ask... The music commission is running a

school competition for a new song—the “Write the song of NZ Music Month”. This closes 20 MARCH and mp3s and lead sheets will be available before MAY.

They’ll be up on the new *Tune ME In* and NZMC websites.

Schools and Community groups are encouraged to put up ‘You-tubes’ of their versions

of the song during MAY ... Local MPs will want to be photographed singing the song with their constituents and positive relationships and discussions regarding the importance of music education will take place!

Contact:

stephanie@nzmusic.org.nz

MEM— MUSiC Education Manawatu 2010

Music Education Manawatu is holding a fascinating percussion & voice workshop on March 20th.

Suitable for community musicians and educators and all those who enjoy playing with rhythm and voice.

Details are ...

1. Sing the Rhythm & Rhythm the Song: A workshop with Julian Raphael : Saturday

March 20th, 10-4.00 pm

Wesley Broadway Methodist Church, 264 Broadway Avenue, Palmerston North

Join the Manawatu community and Julian Raphael, a leading exponent and teacher of world music, in this intercultural celebration.

All skill and experience levels are very welcome.

#2. Saturday 15 May

Facilitator: Maria Winder

Venue: Wesley Centre, 264 Broadway Avenue, Palmerston North

Morning session 10am - 12.30pm: **Ukulele for beginners**

Afternoon session 1.30pm - 4.00pm: **Playing your ukulele with Kiwikids Songs 16** Morning and afternoon tea provided.

For more details contact play@jennifersmusic.co.nz

“Present arguments that show music education can help to address the priorities they already hold”

Dr Richard Letts
Music Council
Australia

On music education advocacy...

Spotlight on MEM

Introducing one of the friendly MEM committee members:

Hi. I'm Trish Moor. I am a trained early childhood teacher and I have a special passion that young children are exposed to the world of music - by reproducing music in singing, playing musical instruments and

by learning to appreciate music by listening to it. I believe the earlier a young person starts off on a musical journey, the better, and I make the most of opportunities to encourage this. I'm currently studying for a Grad Diploma of Arts (Music) through Massey which is very stimulating. I relish the chance to



contribute to community music in the Manawatu through singing and keyboard.

Hawkes Bay (HBSME)

News from HBSME

2010 is looking like being a busy year for HBSME with lots of wonderful workshops planned.

5 & 6 March – **World Music workshops with Julian Raphael.**

Friday 5 March will be school workshops

Saturday 6 March will be a teacher's workshop

1 May – (Sat) Orff Workshop

24 July – Kiwi Kids Songs 16 workshop with Maria Winder

11 September – 'Bop it in the Rocket' workshop with Julie Wylie

October – HBSME Scholarship performances

5 & 6 November – Ukulele festival.

Details will be available on these workshops closer to the dates.

Contact **Suzanne Purdy** at suzanne.purdy@xtra.co.nz

for more information.

L-Rt: Grace Davey, Errol Moore, Jennifer Moss, Julian Raphael, Maria Winder, Sally



MENZA –Auckland—Primary

Maria Winder continues with her indefatigable energy to keep the Auckland Primary clusters going in 2010 .

Three have been held in different Auckland regions so far this term. Teachers appreciate that MENZA Auckland provides these free of charge.

These opportunities for teachers to share resources and support each other at these meetings have been much appreciated.

Maria is happily back in the classroom this year as well as leading professional development (PD) opportunities for

teaching and being both active on the national board as well as Auckland.

Her new email:

maria@thesoundofmusic.co.nz



Maria has found the sound of music in 2010!

President report back continued...

At the last board meeting we also met with Richard Thorne and Sally Bodkin (wearing their METANZ hats) to look at ways forward to strengthen advocacy for music education. As most of you will know, that is the primary role of the METANZ Trust. They are proposing a

new website and campaign called to be developed along the lines of the Australian model 'Music Play for life' . Our MENZA individual membership survey 09 indicated that our membership expects advocacy to be a key role of MENZA so we felt it was

time we sat down together and discussed 'reading from the same page'... It was a very useful discussion and there are some exciting developments in the pipeline but these will need to be confirmed by the rest of the METANZ trust members on the 19th March.



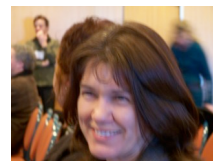
Lee Martelli (with Sophie) gets the award for 'best excuse to resign from the Board 2009' !

<http://www.tki.org.nz/e/community/ncea/music-lvl1.php>

Take a look at the 'new' standards draft for NCEA MUSIC in 2011....

MEO—the team that is Music Education OTAGO - have been working hard to offer a range of PD opportunities for their members in 2010—take a look at the menza website—regions for more information. Adele Voice not only leads the team in Dunedin, she continues to keep our website updated and fresh.

MEC—led by president and national board member, Celia Stewart has started off the year with a number of workshops already ; A Taste of Orff and 3 Michael Griffin Workshops.



Te Oti Rakena and Suzanne Purdy have had to resign from the Board this year . Many thanks for their hard work and input.

Right: Heard of Te Whare Tapere ?? Taonga Puoro Specialist and teacher Horomona Horo taking part in the revival – 6 Feb 2010

Horomona is a MENZA presenter in Nelson 26-27th MARCH



Remember the ISME conference in Beijing this year AUGUST 1... Early bird registrations close 15 MARCH

<http://www.isme.org/2010/>



Auckland “Super -MENZA”—Secondary

A great start to 2010 with opportunity to “beat the paper” war—a February workshop with HVHS HOD Grace Davey proved to be very popular !

5 Cluster groups have been held in the North, South, East, West and Central parts of Auckland the first week of March.

Facilitated by Stephen Rowe—many topics were discussed such as the difference between— “Further assessment opportunity” and “Resubmission” of work for NCEA, a closer look at the latest DRAFT matrix for Levels 1-3 music, to the need for a “Pathways to tertiary music education in Auckland” evening—an opportunity for students and teachers to examine what the tertiary institutions require and offer. Graham McPhail (NZQA) gave teachers at these clusters a chance to meet and talk with a music moderator.

WELLINGTON secondary teachers meet Wednesday, 10th March, at the NZ School of Music (Room 1D02, moving to 1D18) in Mount Cook. It will run from 4pm-6pm.

Apology :

Celia who does an excellent job of the e news, has been unable to compile this at this time due to a family bereavement. This one was compiled by me and is unlikely to be complete. Apologies to those whose submissions to Celia have not made it to these pages...

Stephanie Lees

Fri 26th March
 3:45 Choice of workshops
 ✕ The Joy of Singing
 ✕ Maori and Pasifika Context for Singing
 5:45 Dinner (Provided)
 6:15 Keynote from Horomona
 Horo "Using music to support cross-curricula classroom learning"
 6:45 Group Discussions.
 Supporting literacy and numeracy through music
 7:30 Social Time

Sat 27th March
 9am Panel Discussion
 "Developing a School Singing Culture"
 10:15 Choice of Workshops.
 Making Cross-Curricula Connections with Music
 ✕ Year 0-4
 ✕ Year 5-10
 12:15 Lunch (Not Provided)
 1pm Move, Sing and Play Ukulele.
 Practical uses for songs from a variety of cultural contexts
 3pm Review – Integrating Music with Curriculum Initiatives

MENZA

Presents

Increasing Capability: Singing to Learn, Learning to Play

Practical Music Workshops
 for
 Early Childhood, Primary and
 Secondary Teachers

Nelson
 26th & 27th March

Nelson Central
 School
 Nile St
 Nelson

For more information email
maria@thesoundofmusic.co.nz



MUSIC EDUCATION
 NEW ZEALAND
 Whānau ā Te Whānau

Presenters

Horomona Horo is a Taonga Puoro specialist, vocalist and dancer of Nga Puhi/Taranaki/Ngati Porou descent. This young primary school teacher from Te Kura o te Koutu has played traditional Maori instruments in Holland, Italy, Germany, Austria and Switzerland. From performing the opening dance for the Riverside Casino in Hamilton, to performing with the Welmarer Staatskapelle Orchestra in Germany, Horomona is rooted in his culture but has a global vision. He regularly tours with "Moana and the Tribe". And he loves Capoeira and jamming on everything and anything he can pick up.

Rae Si'ilata is a guitar, ukulele and piano player of Ngati Raukawa/Fijian/Irish descent. She has taught in New Zealand and Samoan primary schools for more than 25 years, specialising in music, kapa haka and ESOL teaching. She was the year 5/6-level model teacher in Learning Media's 'Into Music 4' video. Rae is currently working as a Project Director/Researcher at The University of Auckland and continues to make music as often as she can!

Maria Winder is the director of The Sound of Music Education and the music specialist teacher at a South Auckland primary school. In her former work as music adviser for School Support Services in Wellington and more recently for Team Solutions in Auckland and Northland, she has presented many professional development workshops for primary school teachers. Maria has a particular passion for singing and ukulele playing and has been instrumental in the establishment of ukuleles in schools. She is an active choral singer, conductor, ukulele player and music festival director and is a board member of MENZA.

Please complete this registration form and return to
 MENZA Auckland c/- Maria Winder, PO Box 9541, Newmarket, Auckland 1149

School Contact Details	Workshop Cost	Number of Teachers
Name(s) _____	MENZA members \$100 (Fri & Sat) \$40 (Fri Only) \$60 (Sat Only)	Fri 26 th March _____
School _____	Non-MENZA members \$150 (Fri & Sat cost includes 1 year subscription for MENZA membership) \$60 (Fri Only) \$90 (Sat Only)	Sat 27 th March _____
Email _____	Extra Teachers \$80 (Fri & Sat) This cost applies to extra teachers from the same school, if more than one teacher attends both days.	Both Fri & Sat _____
School Address _____	<i>This low cost has been made possible by funding from the Quality Teaching Partnership Fund</i>	My Total Cost: _____
Phone/Mobile _____		Method of payment (Please tick one of the following options) <input type="checkbox"/> Cheque included (payable to MENZA) <input type="checkbox"/> Automatic payment to MENZA ASB Account 12-3016-0602069-00 (ref – your school name) <input type="checkbox"/> Send invoice to my school

Fri 23th April
 3:45 Choice of workshops
 ✕ The Joy of Singing
 ✕ Maori and Pasifika Context for Singing
 5:45 Dinner (Provided)
 6:15 Keynote from Robyn Trinick
 "Using music to support literacy in the classroom"
 6:45 Group Discussions.
 Supporting literacy through music
 7:30 Social Time

Sat 24th April
 9am Panel Discussion
 "Developing a School Singing Culture"
 10:15 Choice of Workshops.
MUSIC - Making Cross-Curricula Connections with Music
 ✕ Year 0-4
 ✕ Year 5-10
 12:15 Lunch (Not Provided)
 1pm Move, Sing and Play Ukulele.
 Practical uses for songs from a variety of cultural contexts
 3pm Review – Integrating Music with Curriculum Initiatives

MENZA

Presents

**Increasing Capability:
 Singing to Learn, Learning to Play**

Practical Music Workshops for Early Childhood, Primary and Secondary Teachers

**Northland
 23rd & 24th April
 Riverview School
 23 Riverview Rd
 Kerikeri**



MUSIC EDUCATION
 REP. Kaitiaki Takekōwhiri
 Māori ārahi o te kōwhiri

Presenters

Julian Raphael has many years experience as a musician and music leader. He is an exponent and teacher of world music and a passionate advocate of music for all. He is the founding director of the Wellington Community Choir and runs Community Music Junction, an organization committed to the promotion of intercultural, participatory music activity. Julian also coordinates music at the Wellington Rudolph Steiner School.

Rae Si'ilata is a guitar, ukulele and piano player of Ngati Raukawa/Fijian/Irish descent. She has taught in New Zealand and Samoan primary schools for more than 25 years, specialising in music, kapa haka and ESOL teaching. She was the year 5/6-level model teacher in Learning Media's 'Into Music 4' video. Rae is currently working as a Project Director/Researcher at The University of Auckland and continues to make music as often as she can!

Robyn Trinick has been involved in tertiary music education for the past twenty years, focusing mostly on the primary sector. She has a particular interest in the connection between music and language and her current Masters thesis explores outcomes for literacy learning through music.

*Please complete this registration form and return to
 MENZA Auckland c/- Maria Winder, PO Box 9541, Newmarket, Auckland 1149
 Email: maria@thesoundofmusic.co.nz*

School Contact Details	Workshop Cost	Number of Teachers
Name(s) _____	MENZA members \$100 (Fri & Sat) \$40 (Fri Only) \$60 (Sat Only)	Fri 23 rd April _____
School _____	Non-MENZA members \$150 (Fri & Sat cost includes 1 year subscription for MENZA membership) \$60 (Fri Only) \$90 (Sat Only)	Sat 24 th April _____
Email _____	Extra Teachers \$80 (Fri & Sat) This cost applies to extra teachers from the same school, if more than one teacher attends both days.	Both Fri & Sat _____
School Address _____	<i>This low cost has been made possible by funding from the Quality Teaching Partnership Fund</i>	My Total Cost: _____
Phone/Mobile _____		Method of payment (Please tick one of the following options) <input type="checkbox"/> Cheque included (payable to MENZA) <input type="checkbox"/> Automatic payment to MENZA ASB Account 12-3016-0602069-00 (ref – your school name) <input type="checkbox"/> Send invoice to my school

Spread the word ... Or, take a weekend in the sunny north yourself...